

# The Crow



GradFunding's Newsletter

Issue 4, Spring 2016

## NEW POSTGRADUATE LOANS

### Our take on the new loans system

There's a new postgraduate loans system coming in for the 2016-17 academic year. First it will be for Masters funding, but PhD loans are also coming in at some point in the near future (the government hasn't said when yet). The Masters loans look like a great deal- £10,000 a year available for taught and research masters, all subjects, and part and full-time courses. Repayments are 6% of annual income over £21,000 once the student graduates. PhD loans will be £25,000 for the whole degree. The new loans system represents amongst the biggest shakeup of the postgraduate funding system we've seen in a long time: a lot more money (albeit loaned money) will be put in students' pockets.

At GradFunding, we welcome these changes because they provide a greatly needed extra source of support, and will hopefully have the effect of driving students away from the high-interest private loans companies targeted at students which have appeared en masse in recent years. On the other hand, we are also mindful that - even though it is at a much better rate of interest - students will be encouraged to incur even more debt. We are also mindful that this change makes it necessary for postgraduate funding resources like the Alternative Guide to make our place in the market crystal clear, and to show how we dovetail with the new system. However, rather than the new loans system rendering us obsolete, we believe they make the Guide much more important than ever before.

The first reason for this is that the new loans are not enough to bankroll a whole course. After Masters fees have been paid, the full loan of £10,000 will leave (at best) a few thousand left for the student's maintenance. For a PhD, the full loan will average £8,300 a year if the doctorate takes three years, and £6,250 a year if it takes four. This, similarly, will leave precious little money after fees are paid. The Alternative Guide then comes in to supplement this loan funding. Indeed, it must be stressed that charity awards are almost always supplementary- that is to say that charities have always been likelier to back students who had some other income (whether other grants, part time work, savings, or loans from a respectable source) rather than those who present them with a black hole and no other means to fill it. The loans system makes partial funding much easier to get, which in turn makes charities much likelier to offer supplementary funding.

The second reason - and one our customers in postgraduate recruitment are naturally very mindful of - is that supply is clearly going to generate its own demand. Many more students are going to do Masters degrees now the loans are available than would otherwise have done so, and the same will be true of PhDs. There will thus be many more partially-funded students who need extra funding to bridge the gap between what their loan gives them, and what they actually need. Again, the value of flexible supplementary grant funding - a few thousand pounds here and there - be-

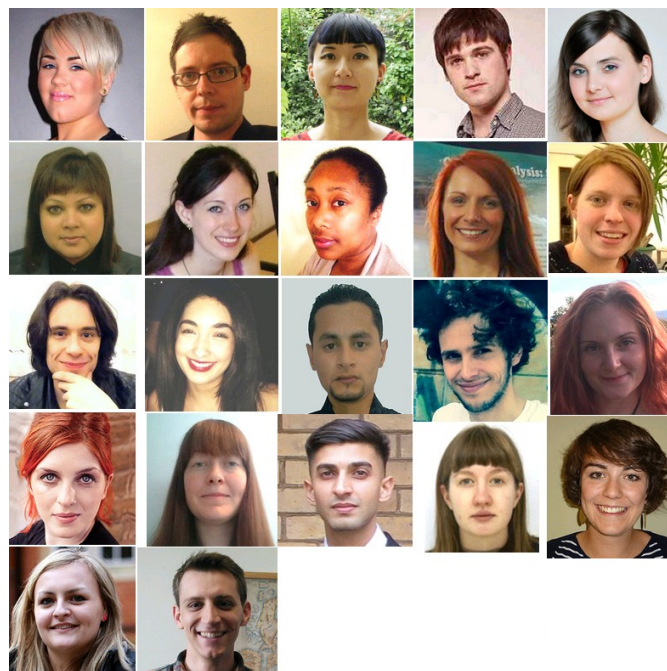
comes more pronounced than ever before. And that's where charities, and the Alternative Guide, excels.

The third reason is simply that we offer grants, not loans. While superficially attractive, encouraging students to incur mountainous debt is inherently problematic, and many students will want an alternative in the form of grants. We will be reformulating the Alternative Guide over the coming months to adjust for the changes, and to reflect its new role in this altered funding world.

## Student Funding Stories:

### Stories from the students who used the Alternative Guide

Since it was launched in 2014, our student story archive—where students share their stories of how they used the Alternative Guide to gain funding—has grown to twenty five, and we have a big backlog to upload! Please go to [www.postgraduate-funding.com/students/student-stories](http://www.postgraduate-funding.com/students/student-stories) to read some of these inspiring stories.



## PREVIOUS FUNDING WORKSHOPS AND TALKS

Our team have been busy delivering our popular funding workshops and talks throughout the country. Since the new 2015-2016 academic year, we have visited Queen Mary, Sussex, KCL, Loughborough, Essex, UCL, Oxford, Hudders-

Interested in a workshop or talk at your university?  
Email [enquiries@gradfunding.co.uk](mailto:enquiries@gradfunding.co.uk) to discuss!

## SONE OF THE NEW CHARITIES ADDED TO THE FUNDING DATABASE

### So British Institute in Eastern Africa

<http://www.biea.ac.uk/study-with-us/research-grants/>

This funding supports original research in the humanities and social sciences. Grants are normally between £500 and £1,000. Priority is given to researchers based in the UK or eastern Africa.

### British-Lebanese Association

<http://www.britishcouncil.org/lebanon-scholarships-scheme-bla.htm>

Provides scholarships worth £13,500 to Lebanese graduates who wish to undertake a full time postgraduate programme in the UK.

### British Society for Eighteenth Century Studies

<http://www.bsecs.org.uk/>

Supports a one-month residence in Oxford for research in the Bodleian on any topic in the study of the 18th Century.

### British Society for Rheumatology

<http://www.rheumatology.org.uk/>

Provides research grants, prizes and conference bursaries for the study of rheumatology.

### British Sociological Association

<http://www.britisoc.co.uk>

Provides prizes and conferences bursaries for the study of sociology.

### Charles & Barbara Tyre Trust

<http://www.charlesandbarbaratyretrust.org.uk/>

The Trust offers financial help to people under the age of 25 years. Applicants must be of Protestant faith and live in the former county of Argyll.

### Charles Wallace Burma Trust

[http://www.wallace-trusts.org.uk/cwt\\_burma.html](http://www.wallace-trusts.org.uk/cwt_burma.html)

Awards student bursaries to Burmese nationals undertaking postgraduate study in the UK.

### Charles Wallace Pakistan Trust

[http://www.wallace-trusts.org.uk/cwt\\_pakistan.html](http://www.wallace-trusts.org.uk/cwt_pakistan.html)

Awards bursaries to Pakistani nationals who are in the final year, or are about to embark on the final year, of a PhD programme at a UK university.

### Chiang Ching-kuo Foundation

<http://www.cckf.org.tw/e-donation.htm>

Doctoral candidates who are non-Chinese citizens and who are completing the last stage of their PhD research at an accredited university in Europe in the field of Chinese Studies.

### Chinese Language Awards

<http://www.gbcc.org.uk/chinese-language-awards.aspx>

Grants awards for the study of Chinese language, normally up to £2,000 each.

### Coleg Cymraeg Cenedlaethol

<http://www.colegcymraeg.ac.uk/en/funding/undergraduateandmastersscholarshipsscheme/mastersscholarshipsscheme/>

Offers scholarships up to the value of £3,000 to students who wish to undertake a masters degree that is delivered either partially or fully in Welsh.

### Commonwealth Shared Scholarships

<http://cscuk.dfid.gov.uk/apply/shared-scholarships/info-candidates/>

Support applicants from developing Commonwealth countries who are undertaking taught masters programmes in the UK. The annual award covers tuition fees, return airfare, a maintenance grant and a thesis grant of £225.

## UPCOMING WORKSHOPS

19th February: University of Sheffield

22nd February: University of Essex

29th February: University of Essex

29th February: University College London

1st March: Birkbeck

3rd March: University of Reading

9th March: University of the Arts London

10th March: KCL

11th March University of Sussex

21st March QMUL

### PDF SUBSCRIBER?

WANT TO UPGRADE TO THE  
ALTERNATIVE GUIDE ONLINE?

We can make you a special discounted 'upgrade' quote. Get in touch!

[enquiries@gradfunding.co.uk](mailto:enquiries@gradfunding.co.uk)  
0207 564 8172



THE ALTERNATIVE GUIDE TO  
**POSTGRADUATE FUNDING**  
Online

